

Wi-Fi Wireless Weather Station

With 7" LCD



- Measures temperature, humidity, wind speed, wind direction, rainfall, solar radiation and UV
- Transmits wirelessly to the receiver
- Connects to your router and the Internet



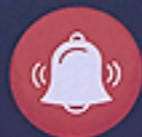
WiFi Connection



Indoor/Outdoor Temperature



Solar Radiation
and UV Index



High/Low Weather Alerts



Time



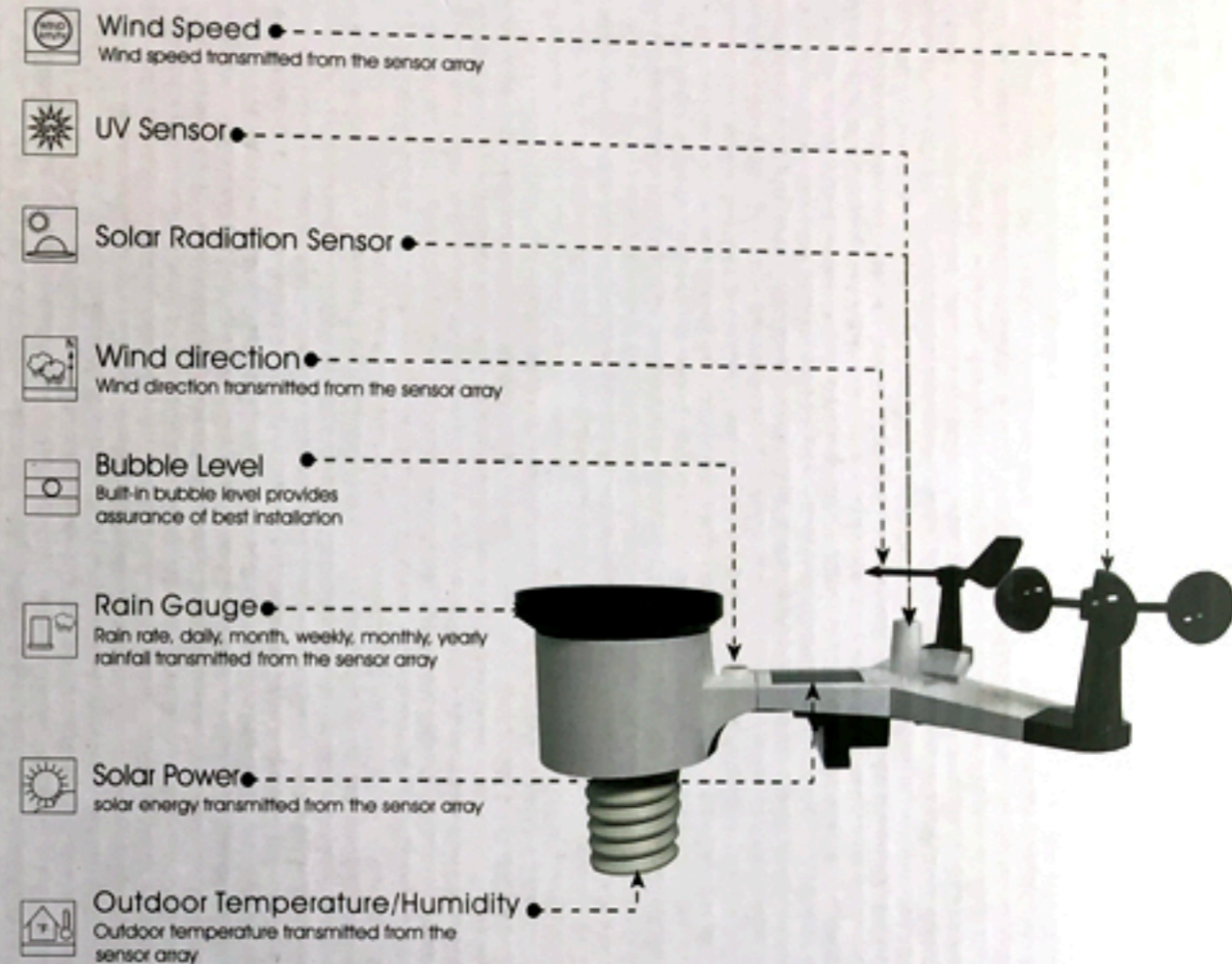
Indoor/Outdoor Humidity

Receiver:



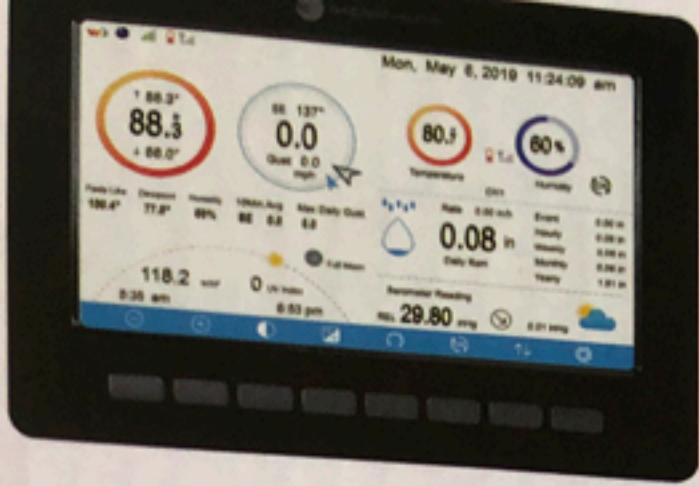
- Full Color HD Display with Easy Graphical Set Up Screens
- Displays Outdoor Temperature, Feels Like, Dew Point, Wind Speed, Wind Direction, 10 Minute Average, Max Daily Gust, Indoor Temperature and Humidity.
- Supports up to 8 additional remote thermos-hygrometer sensors (optional).
- Rainfall (hourly, daily, event, weekly, monthly, yearly)
- Barometric Pressure (absolute and relative). Forecast Icon based on pressure.
- Solar Radiation and UV Index
- Sunrise, Sunset, Moonphase
- WiFi connection to your wireless router and the Internet.
- Free hosting services at AmbientWeather.net – features real-time interactive dashboard, graphs, email and text alerts, IFTTT, compatible with Amazon Alexa, Google Home, Text Files, API for Programmers.
- Connect to WeatherUnderground.com
- Console has lifetime data storage with MicroSD Card.
- Alarm, High/Low and Full Parameter Calibration.

Outdoor Transmitter:



Indoor Transmitter:

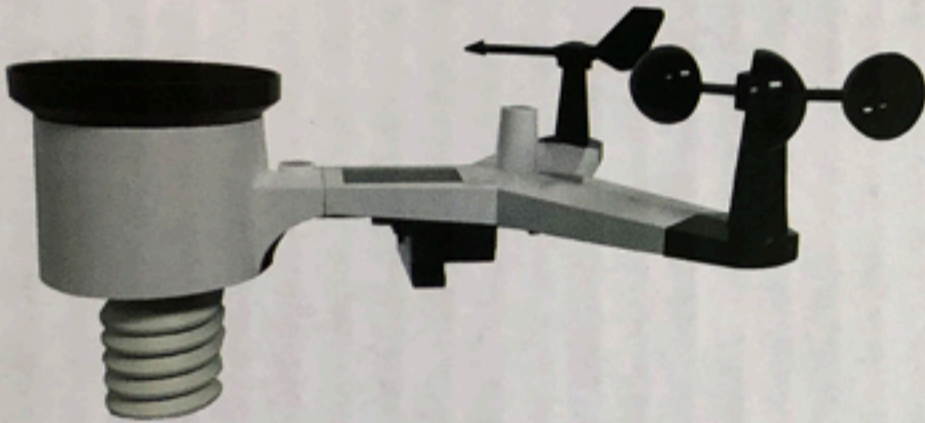




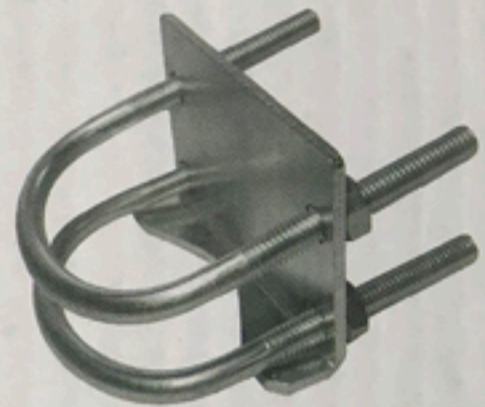
1 x Display Console



1 x Power Supply



1 x Outdoor Sensor



1 x Mounting Hardware



1 x Indoor Sensor

Ambient Weather WS-2000 Osprey

Solar Powered Wireless WiFi Weather Station

Specifications:

Indoor Temperature:	14 to 140 °F
Outdoor Temperature:	-40 to 149 °F (lithium batteries) -23 to 140 °F (alkaline batteries)
Outdoor/Indoor Humidity:	10%~99%
Wind Speed:	0~50m/s / 0~100mph (km/h, knot, mph, bft, ft/s, m/s)
Wind Gust:	km/h, knot, mph, bft, ft/s, m/s
Wind Direction:	Degrees, cardinal directions
Wind Chill:	Yes °C/°F
Dew Point:	Yes °C/°F
Rain Gauge:	0~9999mm, inch (Daily, weekly, monthly, yearly)
Rain Rate:	mm/hr, in/hr
Weather Forecast Symbols:	Sunny, partly cloudy, cloudy, rainy
Barometric Pressure:	300~1100hPa (8.85-32.50 inHg) hpa, inHg, mmHg (Absolute, Relative)
UV Index:	uW/cm ²
Solar Radiation (lux) Meter:	0~120k Lux (W/mm ² , lux, fc)
Time and Date Display:	(HH:MM:SS)
Mounting Hardware:	Pole, U bolts, clamps, nuts
Level Indicator:	Bubble
Display Unit Dimensions:	7-5/8" (W) x 5-3/8" (H) x 3/4" (D)